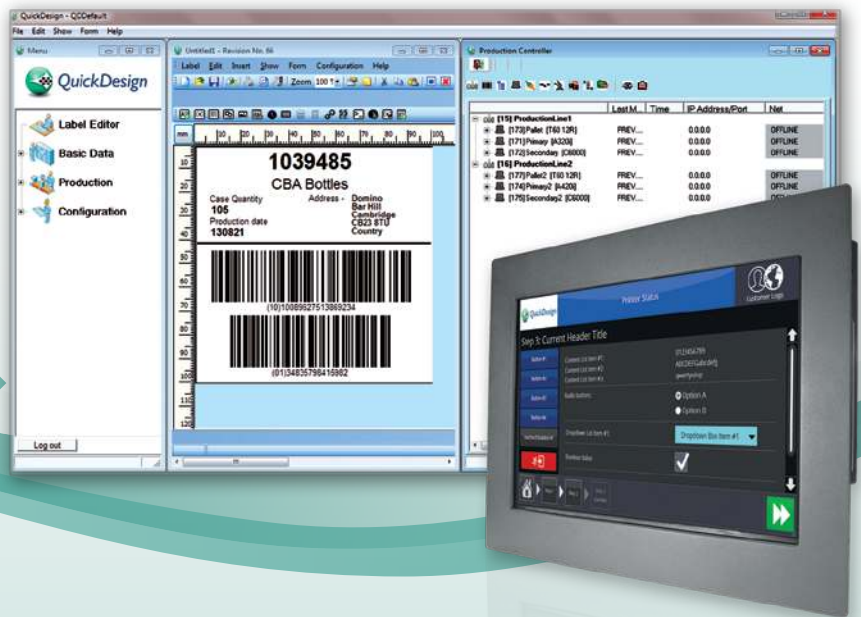


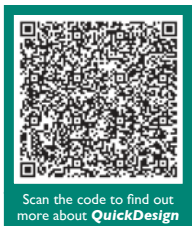


QuickDesign

Message design and print control for your production line



Take control of your coding process –
reducing errors and improving productivity –
with Domino *QuickDesign*



Domino. Do more.

Increase efficiency

In today's legislative driven environment, the need for consistent and accurate coding is greater than ever. Domino's **QuickDesign** software enables central, factory-wide control for your production data – from product to pallet.

Easy to use and integrate across a wide range of technologies, **QuickDesign** is easily scalable to ensure compliant coding throughout your production facility.

Operator & Operator Pro

Redefining the standard for Operator simplification, **QuickDesign's** Operator & Operator Pro screens ensure error free selection of messages, products or jobs guaranteeing your codes are deployed correctly to the production line. The easy to use screens can be quickly configured to match your working processes, and are optimised for use on factory floor touch screen devices.



A diverse range of applications

QuickDesign's flexible configuration and multi-coder compatibility makes it the ideal choice for message design in applications across a wide range of industries – for primary, secondary and tertiary coding operations

WYSIWYG design for all Domino technologies, including CIJ and Laser coders for primary applications



Secondary packaging and labelling – **QuickDesign** supports graphics and GSI compliant barcodes as well as printer counters and clocks



Complex pallet label design is made easier by linking to product tables and external data sources



Streamline coding operations

Mitigate errors

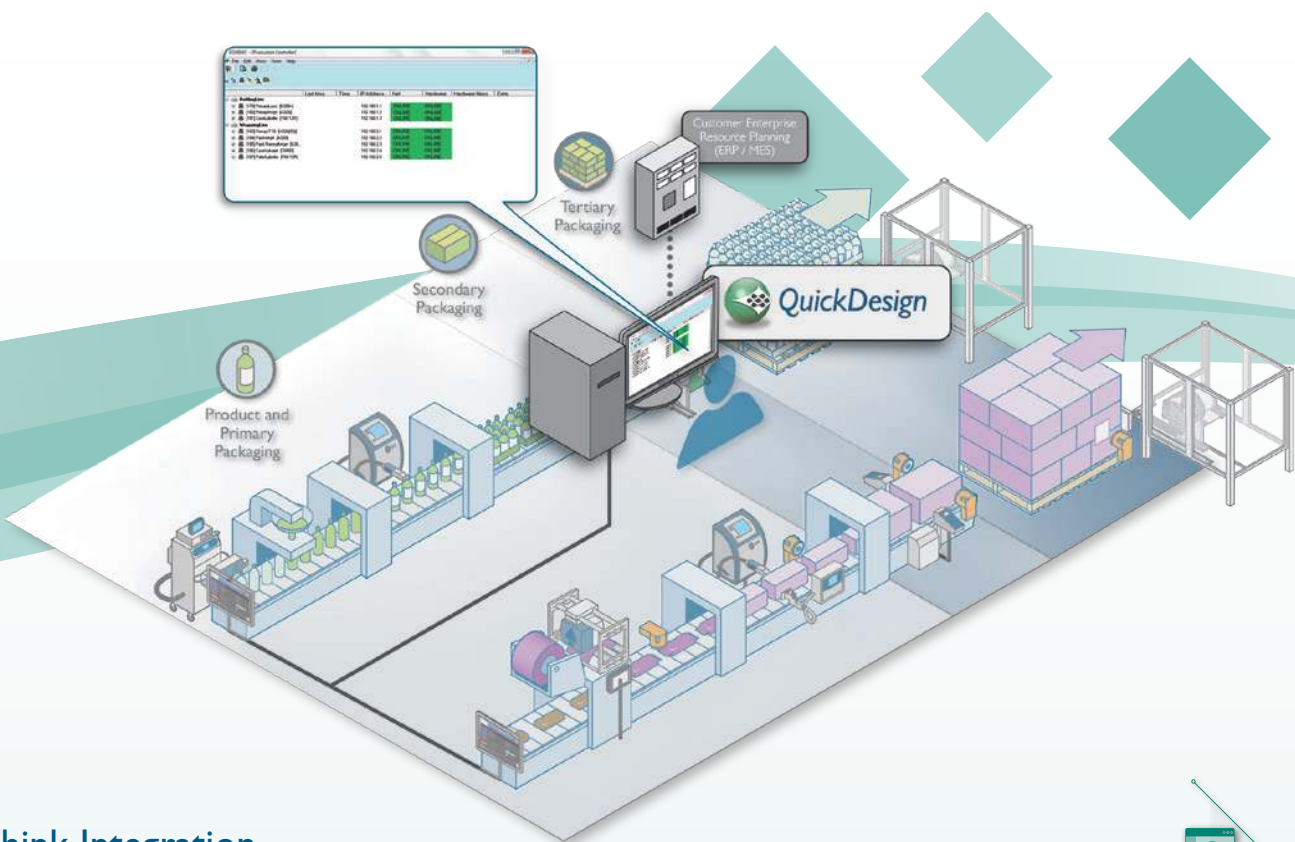
- Minimise data entry by creating templates and linking to internal and external product databases
- Simple operator interfaces limit possibilities for human error
- Consolidate sources of product data – making it easier to manage and keep up to date

Integrate systems

- Interact with other systems such as MES (*QuickDesign Unite*) and ERP (*QuickDesign Production Plus*) using file transfer
- Reduce setup and changeover times by removing message creation from the line
- Pull in data from central databases to reduce duplication

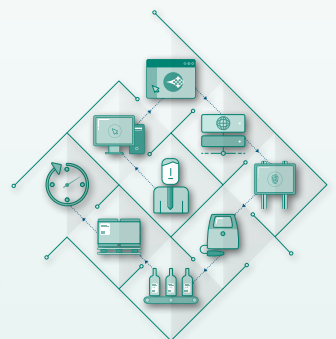
Standardise

- Standard user experience across all technologies reduces training needs
- Full Unicode character set ensures support across all sites, anywhere in the world
- Future proof – fully scalable and upgradeable solution from your first coder to your 100th



Think Integration

We offer a range of modules for you to automate message creation and deployment. Based on the *QuickDesign* platform, our automation modules address real-world production applications with a range of packaged features developed and refined by our extensive experience within manufacturing environments. Visit www.domino-printing.com/integration to learn more.



Domino. Do more.

Technical Specification:

	QuickDesign				
	Standard	Datalink	Unite	WS	Production Plus
Typical Applications					
Centralised Label Management	◆	◆	◆	◆	◆
Reference Master Data Source		◆	◆		
Integration to MES/Control Software			◆	◆	
Integration to ERP Software					◆
Integration					
ODBC linking to external databases	–	◆	◆	–	–
File Interfacing (*.txt & *.xml)	–	–	◆	◆	◆
Weihenstephan interface	–	–	–	◆	–
Single record per file	–	–	◆	◆	◆
Multiple records per file	–	–	–	–	◆
User Interfaces					
Standard Label Editor	◆	◆	◆	◆	◆
Operator Mode	◆	–	–	–	–
Operator Pro	–	◆	◆	–	◆
Production order management screens	–	–	–	–	◆
Message creation/label editing					
WYSIWYG message design	◆	◆	◆	◆	◆
Save, load and print messages	◆	◆	◆	◆	◆
Unicode characters	◆	◆	◆	◆	◆
Text elements	◆	◆	◆	◆	◆
Barcode elements*	◆	◆	◆	◆	◆
Date/time and shift code elements	◆	◆	◆	◆	◆
Coder counter elements	◆	◆	◆	◆	◆
Embedded images (*.jpg and *.bmp)	◆	◆	◆	◆	◆
Printer populated elements (printer variables)	◆	◆	◆	◆	◆
Data fields	◆	◆	◆	◆	◆
User prompted elements	◆	◆	◆	◆	◆
Device connectivity					
Multi coder connections	◆	◆	◆	◆	◆
Multi technology **	◆	◆	◆	◆	◆
Desktop Printers (ZPL protocol)	◆	◆	◆	–	◆
Office Printers (Windows printer drivers)	◆	◆	◆	–	◆
USB Barcode scanner for job selection	◆	◆	◆	–	◆
TCP/IP Barcode scanner for Pallet receipt	–	–	–	–	◆
Installation and system administration					
Enterprise server/client architecture	◆	◆	◆	–	◆
Multiple machine/user environment	◆	◆	◆	–	◆
Database for central data storage	◆	◆	◆	◆	◆
Windows service for Print Controller	◆	◆	◆	◆	◆
Secure login	◆	◆	◆	◆	◆
Customisable permission levels	◆	◆	◆	◆	◆
Upgradeable	◆	◆	◆	◆	◆

* Standard barcode symbologies supported include Code 128, Code 39, GS1-128, EAN13, EAN8, I2of5, ITF14, UPCA, UPCE, GS1 databar, GS1 databar Expanded Data Matrix, QR Codes, PDF417, Maxicode - code options may be restricted by specific coder capabilities

** Multi technology includes all major Domino coding and marking products including A-Series, C-Series, D-Series, F-Series, G-Series, M-Series and V-Series

Supported Languages – English, German, French, Italian, Spanish, Chinese (simplified), Russian, Arabic, Swedish, Norwegian, Polish, Japanese, Korean and Portuguese

O/S compatibility – Windows XP (SP3+), Windows 7 (32 & 64 bit), Windows 8.1, Windows server 2003/2008/2012

Minimum system requirements – Pentium 4 (2GHz+) or greater with 2GB RAM, 1GB HDD, 100 BaseT Ethernet port