

# Print & Apply goes Print, Check, & Apply

M-Series solution for serialisation and patient safety



## Overview

Counterfeiting is a growing problem, which effects pharmaceutical companies on a global level. Protecting patient safety is a top priority in the pharmaceutical industry. As such, new demands are constantly being placed on the labelling process for serialisation and aggregation.

Working with customers in the pharma industry, Domino has developed a M-Series solution which offers a secure and simplified code and label validation.

With an integrated vision system like the Domino R-Series, all labels are checked before being applied on a product. All non-approved labels are rejected and securely managed by the solution. Domino print and apply is no longer just about printing and applying a label – it is about making sure you can protect your brand and deliver products with confidence, knowing that all patient safety needs are met.

## Fast facts

- ◆ The solution has been delivered to a number of customers and OEMs within the pharma industry.
- ◆ A vision system like Domino R-Series validates the information on the printed label.
- ◆ Compatible with all the leading serialisation solution providers for the life sciences industry.
- ◆ A signal is sent from the camera to the PLC system – if the code is not good enough, the dispenser will reject the label.
- ◆ The reject function makes sure all non-approved labels are handled safely.



# Working with leading companies within the pharma industry to enhance patient safety

## Increasing demands

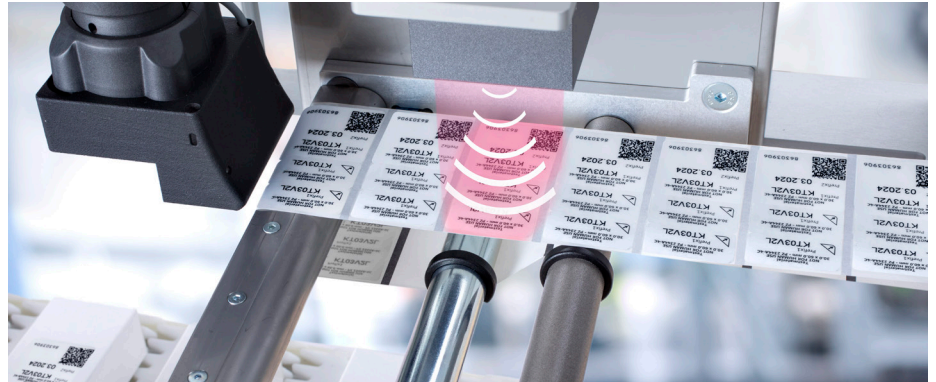
The pharma industry is the second largest sector for Print & Apply technology. With constantly growing demands to stop counterfeiting and ensure patient safety, partners like Domino must ensure that coding and marking equipment lives up to the increased requirements, without compromising on machine quality and reliability.

This M-Series solution, sold to a number of customers and OEMs within the pharmaceutical sector, facilitates a successful partnership that benefits everyone in the supply chain, to the end consumer, who wants to know that any medicine they buy is safe.

## Printed, checked and applied

To add an extra layer of security to the system, Domino developed a module integrated between the printer and the applicator, which allows a vision camera to be mounted.

When a label has been printed, the camera checks its readability and content before the label is applied on the product or package. By doing this, the company can make sure all products are labelled correctly and ensure the process for serialisation and aggregation. As validation takes place before product labelling, the manufacturing does not have to dispose of incorrectly labelled products. This saves time and money and reduces waste.



## Handling non-approved labels

The system uses OCV/OCR content checking to validate the labels. If the system detects a non-readable label, a signal will be sent from the PLC to a built-in reject function in the module. The label



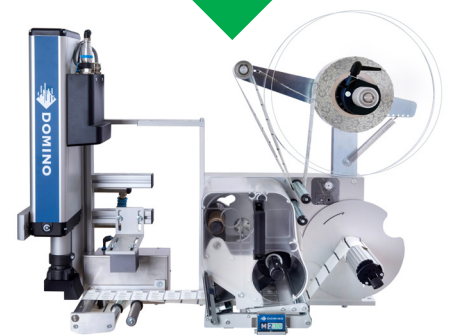
will be automatically rejected, and remain on the backing paper as it is fed onto the unwinder. The next approved label will instead be applied on the product or package, and no printed labels will get lost in the production process.

## One single, trusted supplier

One of the great advantages in partnering with Domino is that you can benefit from our full range of knowledge, services, and equipment for your entire coding and labelling process. Domino offers a global reach with dedicated and well-trained service technicians in your local area. This will help you reduce cost and time, so you can focus on your customers' needs instead.

## Solution facts

- ◆ Solution delivered for a variety of label applicator types including tamp, blow and corner wrap
- ◆ All around vision camera bracket
- ◆ Domino R-Series vision system available
- ◆ Extended beak plate for label support
- ◆ Extra home/away sensor
- ◆ Extra mechanical stop in applicator
- ◆ I/O signals; I0 in and I0 out
- ◆ Cable marking
- ◆ Additional sensor verifying rejected labels are in place
- ◆ OEM lift eye
- ◆ Remote box
- ◆ Quick release connections



## Video

Scan to watch a video of the solution



## R-Series

Scan to learn more about the R-Series vision system



[www.domino-printing.com](http://www.domino-printing.com)